

United States Department of the Interior
National Park ServiceNational Register of Historic Places
Registration FormRECEIVED
JUN 20 1990NATIONAL
REGISTER

This form is for use in nominating or requesting determinations of eligibility for individual properties or districts. See instructions in *Guidelines for Completing National Register Forms* (National Register Bulletin 18). Complete each item by marking "x" in the appropriate box or by entering the requested information. If an item does not apply to the property being documented, enter "N/A" for "not applicable." For functions, styles, materials, and areas of significance, enter only the categories and subcategories listed in the instructions. For additional space use continuation sheets (Form 10-900a). Type all entries.

1. Name of Property

historic name Newman Brothers Building
other names/site number N/A

2. Location

street & number 602-608 S. Main Street N/A not for publication
city, town Joplin N/A vicinity
state Missouri code MO county Jasper code 097 zip code 64802

3. Classification

Ownership of Property

☒ private
☐ public-local
☐ public-State
☐ public-Federal

Category of Property

☒ building(s)
☐ district
☐ site
☐ structure
☐ object

Number of Resources within Property

Contributing	Noncontributing
1	0 buildings
0	0 sites
0	0 structures
0	0 objects
1	0 Total

Name of related multiple property listing:

N/A

Number of contributing resources previously
listed in the National Register N/A

4. State/Federal Agency Certification

As the designated authority under the National Historic Preservation Act of 1966, as amended, I hereby certify that this
☒ nomination ☐ request for determination of eligibility meets the documentation standards for registering properties in the
National Register of Historic Places and meets the procedural and professional requirements set forth in 36 CFR Part 60.
In my opinion, the property ☒ meets ☐ does not meet the National Register criteria. ☐ See continuation sheet.

Signature of certifying official G. Tracy Mehan III, Director

Date 6/17/90

Department of Natural Resources and State Historic Preservation Officer

State or Federal agency and bureau

In my opinion, the property ☐ meets ☐ does not meet the National Register criteria. ☐ See continuation sheet.

Signature of commenting or other official

Date

State or Federal agency and bureau

5. National Park Service Certification

I, hereby, certify that this property is:

- ☒ entered in the National Register.
☐ See continuation sheet.
☐ determined eligible for the National
Register. ☐ See continuation sheet.
☐ determined not eligible for the
National Register.

☐ removed from the National Register.☐ other, (explain:)

Beth Boland

7/23/90

Signature of the Keeper

Date of Action

6. Function or Use

Historic Functions (enter categories from instructions)

COMMERCE/TRADE - Department Store

Current Functions (enter categories from instructions)

COMMERCE/TRADE - Specialty Store

RECREATION AND CULTURE - Music Facility

7. Description

Architectural Classification

(enter categories from instructions)

LATE 19TH AND EARLY 20TH CENTURY

AMERICAN MOVEMENTS - Chicago

Materials (enter categories from instructions)

foundation Concrete

walls Brick

roof Asphalt

other Copper

Steel

Describe present and historic physical appearance.

The Newman Brothers Building is a two-part, five-bay, rectangular plan, five-story commercial building constructed in 1910. The design of the Newman Brothers Building shows influences of the Chicago Style with the large expanses of glass on each floor and well defined storefront and cornice. The building has major facades facing both 6th Street and Main Street and has an original storefront and upper story detailing on both facades. The west facade faces an alley and has no decorative detailing. On the south facade the building shares a party wall with a two-story masonry structure and above this party wall the building has minimal detailing.

The Newman Brothers Building is located in downtown Joplin, Missouri (1980 pop. 40,100). The building occupies a prominent corner lot in the historic commercial section of the city along Main Street. Like most other commercial buildings on Main Street the building is sited on a rectangular lot, is flush with the sidewalk, and occupies all of the lot. There are no outbuildings. The building has primary entrances and storefronts facing both 6th Street and Main Street. The building's exterior has not been significantly altered and it retains its original historic character.

The storefront on the Main Street facade consists of five bays with the central bay containing the facade's primary entrance. This entrance has two sets of original wood and glass double doors of single light paneled design. Above each set of doors is a rectangular single light transom. Flanking the doors are small display windows which are elliptical in form and have elliptical glass panels resting on stone bulkheads. The display windows in the flanking bays have copper or steel muntin bars and rest on stone bulkheads or sills. Above the display windows is a cast iron transom bar decorated with a Greek fret band.

Above each transom bar is a three light transom with wood muntin bars. Dividing each storefront bay are stone Doric pilasters. Extending above the display windows is an original cast iron canopy supported by large brackets and decorative rods anchored into the face of the building. This canopy has roof detailing of finials designed as small bound torches and a single light and cast iron valence. The glass lights of the valence have been painted in recent years. The canopy support brackets also contain original hanging glass globe fixtures.

United States Department of the Interior
National Park Service

National Register of Historic Places
Continuation Sheet

Section number 7 Page 1 Newman Brothers Building, Joplin, Missouri

Above the storefront is a stone entablature and cornice. The second, third, and fourth stories have identical plan arrangements and detailing. Each story is divided into five bays with each bay containing tri-part Chicago Style windows. Each window has a central fixed rectangular light with flanking single light hinged casement windows. Above each window is a rectangular single light transom. Each window has a stone sill, bracketed sheet metal lintel, and corner floral and ribbon medallions. Between each window on the second, third, and fourth stories are recessed brick panels in the spandrels. At the third story central window is a cast iron balcony with its railing resting on a stone platform. The platform is supported by stone volute brackets and beneath are stone modillion blocks. The railing has square balusters and inset wreaths which contain the letter "N".

Dividing the fourth and fifth stories is a copper cornice with ball and ribbon medallions. Above the fifth story is a large projecting copper cornice with modillion blocks, voluted brackets, egg and dart molding, and acroterions at the roofline. Between each bay is a relief of a lion's head design and copper cartouches. Below the cartouches are wreaths which contain original electric light glass globes and below the wreaths are copper strips arranged in the letter "N".

The Sixth Street facade has a similar five-bay configuration and is identical in all respects to the Main Street facade with only a few exceptions. At the storefront on this facade the original single light glass and frame doors have been removed and replaced with ca. 1970 solid wood doors. Several windows on the upper stories of this facade have been covered with plywood and the roofline lacks electric glass globes.

The rear, or west, facade is divided into five bays and has an exterior of five course common bond brick. Entrances on the first story face an alley and have ca. 1970 glass and metal doors. Windows on each floor are three-over-three vertical light sash with stone sills and wire glass lights. The upper facade windows are grouped together in threes on each floor. At the roofline is a brick smokestack for the heating system and also on the rear facade is an original full height steel fire escape. The south facade shares a party wall with an adjacent two-story brick building. The upper floors have a five course common bond exterior and three light vertical sash windows. Above the fifth story on this facade is a raised brick penthouse story which houses the building's elevator machinery and mechanical rooms.

8. Statement of Significance

Certifying official has considered the significance of this property in relation to other properties:

☐ nationally ☐ statewide ☒ locally

Applicable National Register Criteria ☒ A ☐ B ☒ C ☐ D

Criteria Considerations (Exceptions) ☐ A ☐ B ☐ C ☐ D ☐ E ☐ F ☐ G

Areas of Significance (enter categories from instructions)

Commerce

Architecture

Period of Significance

1910-1939

1910

Significant Dates

1910

1910

Cultural Affiliation

N/A

Significant Person

N/A

Architect/Builder

Allen, Austin--Architect

State significance of property, and justify criteria, criteria considerations, and areas and periods of significance noted above.

The Newman Brothers Building in Joplin, Missouri, is significant under Criterion A and C for its role in city commerce and its architectural design. The building was constructed in 1910 as one of the city's largest and finest department stores and the business held commercial prominence during much of the early 20th century.¹ The building's design is reflective of the Chicago Style of commercial architecture and it remains as the city's most representative high-rise example of this style. The Newman Brothers Building retains the majority of its original storefront and interior detailing and alterations to the building have not been extensive. The building is presently under renovation on the basement and first floor levels for commercial use.

Joplin is situated in the southwest corner of Missouri and this area was originally farmland containing a few residences and stores in the early 19th century. The discovery of extensive lead deposits in the 1850s brought attention to the area,² but it was not until after the Civil War that mining efforts became significant.² In 1871, landowner John Cox platted a seventeen acre townsite on Joplin Creek to take advantage of the many miners coming to the area. Later that year a newspaper in Carthage wrote of a "new town in Jasper County. Its name is Joplin, and it is located fourteen miles southwest of Carthage on the farm of J.C. Cox. It has lead in unlimited quantities under it. Everybody out of employment ought to go there and dig."³

The lead mining boom resulted in the establishment of Joplin as a major community by the late 19th century. From a temporary mining camp of tents and frame dwellings, the town grew to a city of 26,000 by 1900.⁴ Stone and brick churches, schools, and social buildings were constructed in these years and residential areas expanded to the east and west from the commercial section along Main Street. Numerous German immigrants came to Joplin and started industries such as a cigar manufacturing plant, a brewery, and woolen mill.⁵

☒ See continuation sheet

United States Department of the Interior
National Park Service

National Register of Historic Places Continuation Sheet

Section number 8 Page 1

Newman Brothers Building, Joplin, Missouri

One of the German families which came to Joplin in these years was that of Joseph Newman. Joseph Newman emigrated to Pennsylvania from Germany before the Civil War and opened a clothing store in Harrisburg.⁶ Disatisfied with his business, Newman moved his family to Pierce City, Missouri, in 1871 and founded the Newman Mercantile Company, selling clothing, gentlemen's furnishings, boots, and shoes. Newman became a prominent resident of Pierce City but the growth and development in Joplin caught Newman's attention. In 1898, Newman sent his son Albert, and son-in-law, Gabe Newburger, to Joplin to open a store at the corner of Fourth and Main Streets. This store immediately prospered and a few years later the store moved to a larger location at 517 S. Main Street.⁷

Newman's decision to open a store in Joplin made good business sense. In the 1890s Joplin began a period of intensive growth and development which lasted until 1920. Between 1900 and 1920 the community grew from a population of 26,000 to 33,500, and it became the major commercial center for the Tri-State region of Missouri, Oklahoma, and Arkansas.⁸ The lead and zinc mines in the area were some of the most productive in the country and Joplin was the commercial and residential center of this mining area. Main Street became transformed during these years as numerous masonry commercial and public buildings were constructed.

By the early 1900s the shopping habits of the country had become more sophisticated, resulting in the rise of large department stores in major urban areas. High-rise department stores offering a wide selection of merchandise became popular among shoppers and, by 1910, Joseph Newman's sons Albert and Sol felt that Joplin was ready for such a store. A large lot containing several small buildings was purchased at the southwest corner of Sixth and Main Streets and construction began on a five-story department store which would contain 50,000 square feet of shopping area.⁹

Joplin architect Austin Allen was selected to design this building which was to be one of the largest ever built in the city. Allen grew up in Joplin and later studied architecture at the University of Pennsylvania and in Europe. He worked for a New York architectural firm for several years before returning to Joplin in 1905. Allen became a noted architect of the city and designed a number of residences and commercial buildings between 1905 and 1917.¹⁰ His design for the Newman Brothers Building followed the influence of the popular Chicago Style with a transparent skin over the structural skeleton.

United States Department of the Interior
National Park ServiceNational Register of Historic Places
Continuation SheetSection number 8 Page 2

Newman Brothers Building, Joplin, Missouri

Allen's design for the building called for concrete and steel construction with large expanses of windows on the main facades facing Main and Sixth Streets. Windows influenced by the Chicago School were added with large central rectangular lights flanked by narrow hinged casement lights. Exterior detailing featured a large copper cornice at the roofline and cast iron balconies. The interior was composed of large open spaces on each floor supported by concrete and steel columns. The Newman Brothers Building was considered one of Allen's finest designs in the twelve years in which he practiced, and upon his untimely death at age thirty-six in 1917, he was widely regarded as one of the area's leading architects. The Newman Brothers Building and the Elk's Club Lodge (NR, 1985) are regarded as his finest designs built in Joplin. ¹¹

The opening of the Newman Brothers Building in 1910 was heralded as a major event in Joplin. The Joplin News Herald reported that "no achievement accomplished in the city of Joplin stands out so clearly as a monument to the planning and labor which it brought forth," and called it a "palatial home of merchandizing."¹² The day of the grand opening featured a thirty piece symphony and hundreds of patrons passed through the doors. Shoppers were greeted by a sumptuous interior with ornate gilded plasterwork, parquet floors, bronze elevators, and an ornate cast iron staircase. Across the storefront on both 6th and Main Streets was a large cast iron awning to shield patrons from inclement weather. Upon its completion the building cost \$150,000 while interior fixtures and elevators cost an additional \$100,000. At the roof the company erected the largest illuminated sign in Joplin. ¹³

Newman Brothers was the city's best known department store during much of the early 20th century. By 1913, the store employed 200 salespersons and clerks with an annual payroll of \$75,000, and had annual sales of over one million dollars.¹⁴ The value of the building and its merchandise was estimated to be over \$500,000. As a center for shopping Newman Brothers overshadowed all other department stores of the period in Joplin such as Christman's and Ramsey's. The store specialized in men's and women's clothing but also sold furniture, household goods, and many other items.

The Newman Brothers company prospered throughout the 1920s and expanded operations in the Midwest. In 1922, they purchased the Kennedy Dry Goods Company in Enid, Oklahoma and in 1928 bought the Denneky Dry Goods Company in Cedar Rapids, Iowa.¹⁵ The Depression of the 1930s ended this period of expansion. However, the company was able to continue operation of its stores, including the flagship store in Joplin. Newman Brothers continued to be regarded as Joplin's finest department store during these years.

United States Department of the Interior
National Park Service

National Register of Historic Places
Continuation Sheet

Section number 8 Page 3

Newman Brothers Building, Joplin, Missouri

Following World War II, Newman Brothers once again expanded, opening stores in several states. The company opened branch stores in Springfield, Missouri, Hutchinson, Kansas, and Midwest City, Oklahoma. In Joplin a furniture division was opened at 8th and Main Streets and a furniture annex store was opened at 286 S. Main Street.¹⁶ The company had continued success for two decades, but by the mid-1960s the opening of suburban shopping centers and changes in retailing resulted in a decline in sales at the original Newman Brothers Building. In 1972, the company left its downtown building and moved into the Northpark Mall on the edge of the city. The building was sold to the Pentecostal Church of God which used it as a publishing house and bookstore. This denomination owned the building until its recent sale to the present owners who are renovating the basement and first floor levels into a teen center with a dance floor and shops.¹⁷

Recent renovations to the building have retained the original storefront and upper facade detailing. Interior renovations have included some subdivision of the original first floor area, however, these changes are largely the addition of temporary partition walls and no extensive removal of original detailing has occurred. The Newman Brothers Building continues to exhibit its original design and detailing and is the city's finest remaining example of a high-rise Chicago Style commercial building. Through its architectural design and mercantile heritage the Newman Brothers Building is a significant structure of Joplin, Missouri.

9. Major Bibliographical References

Previous documentation on file (NPS): n/a

- ☐ preliminary determination of individual listing (36 CFR 67) has been requested
- ☐ previously listed in the National Register
- ☐ previously determined eligible by the National Register
- ☐ designated a National Historic Landmark
- ☐ recorded by Historic American Buildings Survey # _____
- ☐ recorded by Historic American Engineering Record # _____

☒ See continuation sheet

Primary location of additional data:

- ☒ State historic preservation office
- ☐ Other State agency
- ☐ Federal agency
- ☐ Local government
- ☐ University
- ☐ Other

Specify repository: _____

10. Geographical Data

Acreage of property less than 1 acre

UTM References

A

1	5
---	---

3	6	5	5	6	5
---	---	---	---	---	---

4	1	0	5	2	0	5
---	---	---	---	---	---	---

Zone Easting Northing

B

--	--

--	--	--	--	--	--

--	--	--	--	--	--

Zone Easting Northing

C

--	--

--	--	--	--	--	--

--	--	--	--	--	--

D

--	--

--	--	--	--	--	--

--	--	--	--	--	--

☐ See continuation sheet

Verbal Boundary Description

The nominated property occupies Lots 21 and 22 of Pitcher's Addition, City of Joplin.

☐ See continuation sheet

Boundary Justification

The boundary for the Newman Brothers Building includes all property which has historically been associated with the building.

☐ See continuation sheet

11. Form Prepared By

name/title 1. Philip Thomason/ Teresa Brum

organization Thomason and Associates

date 11/7/89

street & number P.O. Box 121225

telephone 615-383-0227

city or town Nashville

state TN

zip code 37212

United States Department of the Interior
National Park Service

National Register of Historic Places
Continuation Sheet

Section number 9 Page 1

Newman Brothers Building, Joplin, Missouri

Major Bibliographical Sources

Joplin Globe, 26 February 1989

"Joplin, Missouri, Architectural/Historical Inventory." Missouri Office of Historic Preservation, 1987.

Joplin News Herald, 10 November 1910

Kirkman, Kay, and Roger Stinnett. Joplin: A Pictorial History. Norfolk/Virginia Beach: Donning Company, 1981.

Longstreth, Richard. The Buildings of Main Street. Washington, D.C.: Preservation Press, 1987.

Renner, G.K. Joplin: From Mining Town to Urban Center. Northridge, California: Windsor Publications, 1985.

"Souvenir Book of Joplin", 1913. Manuscript on file at the Joplin Public Library.

Notes

1. Joplin, Missouri. "Architectural/Historical Inventory." Missouri Office of Historic Preservation, 1987.

2. Kay Kirkman and Roger Stinnett, Joplin: A Pictorial History (Norfolk/Virginia Beach: Donning Company, 1981), 15.

3. Ibid.

4. Ibid, 63.

5. Ibid, 25.

6. G.K. Renner, Joplin: From Mining Town to Urban Center (Northbridge, California: Windsor Publications, 1985), 100.

7. Ibid.

8. Kirkman and Stinnett, Joplin: A Pictorial History, 101.

9. Renner, Joplin: From Mining Town to Urban Center, 100.

United States Department of the Interior
National Park Service

**National Register of Historic Places
Continuation Sheet**

Section number 9 Page 2

Newman Brothers Building, Joplin, Missouri

10. Joplin Globe, 2 March 1917, p. 4.
11. Joplin, Missouri, "Architectural/Historical Inventory."
12. Joplin News Herald, 10 November 1910, p. 1.
13. Renner, Joplin: From Mining Town to Urban Center, 101.
14. "Souvenir Book of Joplin", 1913. Manuscript on file at Joplin Public Library, unpaginated.
15. Renner, Joplin: From Mining Town to Urban Center, 101.
16. Ibid.
17. Joplin Globe, 26 February 1989, Section 2, Page 2.

**United States Department of the Interior
National Park Service**

**National Register of Historic Places
Continuation Sheet**

Section number 11 **Page** 1

Newman Brothers Building, Joplin, Missouri

2. Steven E. Mitchell
National Register Historian
and State Contact Person
Department of Natural Resources
DPRHP/Historic Preservation Program
P. O. Box 176
Jefferson City, Missouri 65102
Date: May 30, 1990
Telephone: 314/751-5368

**United States Department of the Interior
National Park Service**

**National Register of Historic Places
Continuation Sheet**

Section number Photos Page 1 Newman Brothers Building, Joplin, Missouri

Photograph Continuation Sheet, Newman Brothers Building

Newman Brothers Building
602-608 S. Main Street
Joplin, Jasper County, Missouri
Photo by: Thomason and Associates
Date: June, 1989
Neg: City Planning Office, Joplin, Missouri
Photo # 1 of 8
View: Main and 6th Street facades, view towards southwest.

Photo # 2 of 8
View: 6th Street facade, view towards southwest.

Photo # 3 of 8
View: Main Street facade, view towards southwest.

Photo # 4 of 8
View: View of first floor interior showing Ionic columns, cast iron staircase, mezzanine level and railing.

Photo # 5 of 8
View: View of cast iron staircase connecting the mezzanine and second story levels.

Photo # 6 of 8
View: Interior view of the second floor.

Photo # 7 of 8
View: Interior view of the third floor.

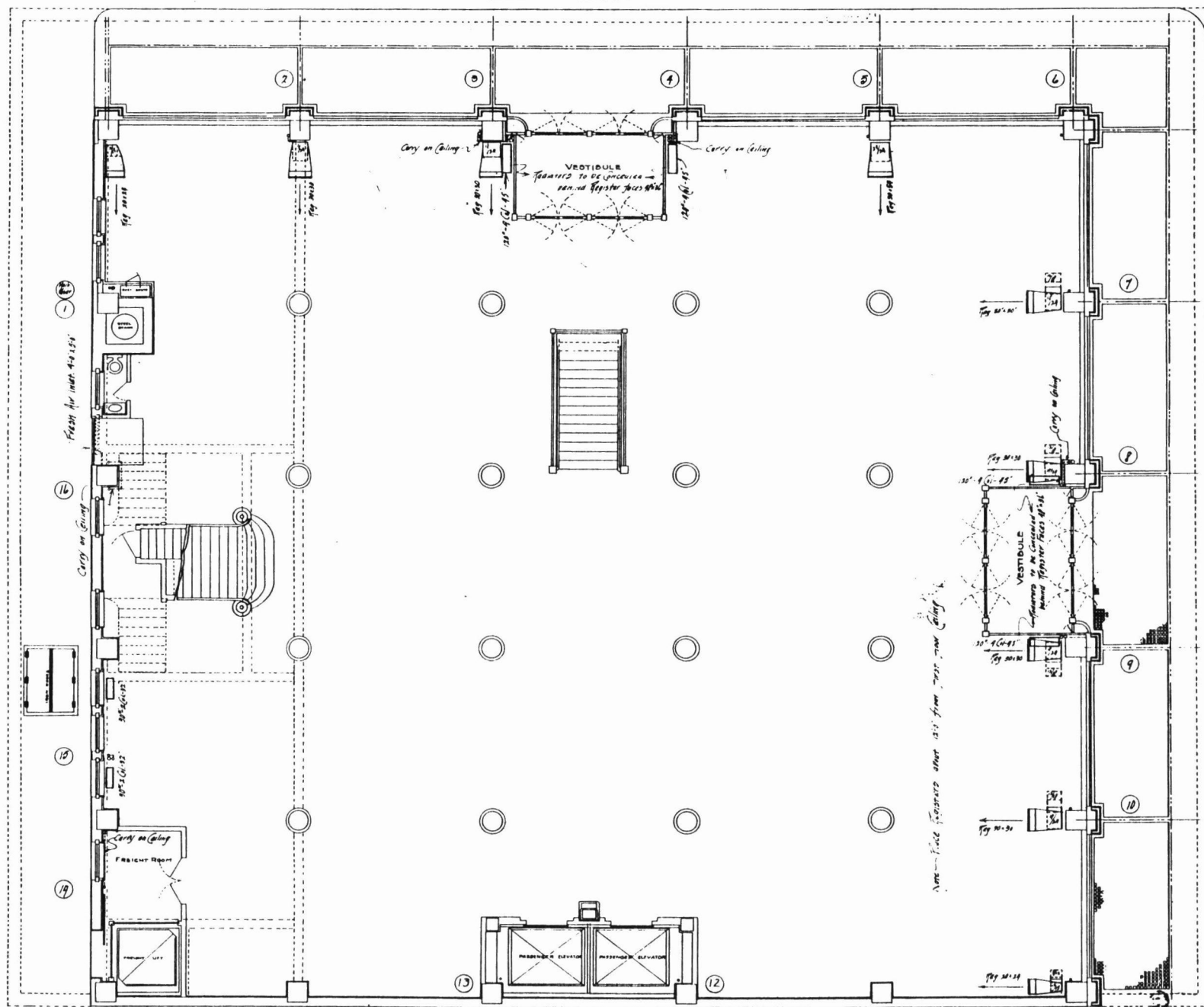
Photo # 8 of 8
View: View of rear (west) and south facades, towards northeast.

Newman Brothers Building
Floor plan for the first
floor.

• DEPARTMENT • STORE • FOR • NEWMAN • REALTY • CO •
• COR • 6TH • & • MAIN • STS • JOPLIN • MO •
• AUSTIN • ALLEN • & • C • WILLIAMS • JR • ARCHTS • 612 • JOPLIN • ST • JOPLIN • MO •
• SEPTEMBER • 20 • 1900 •
Sixth Street

(22)

Main Street

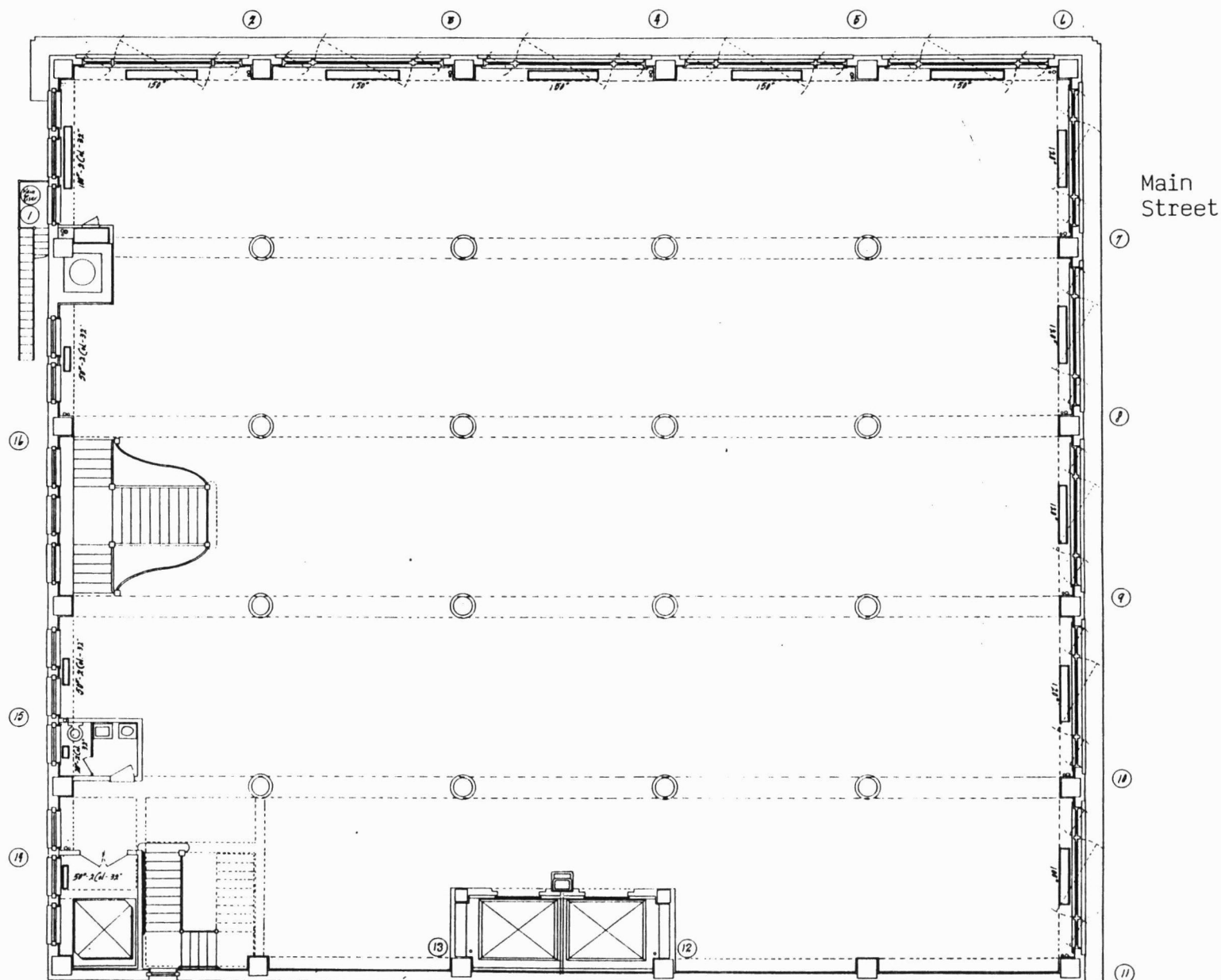


FIRST FLOOR HEATING PLAN
SCALE 1/4 INCH = 1 FOOT

(11)

Newman Brothers Building
Floor plan for the second
floor.

Sixth Street



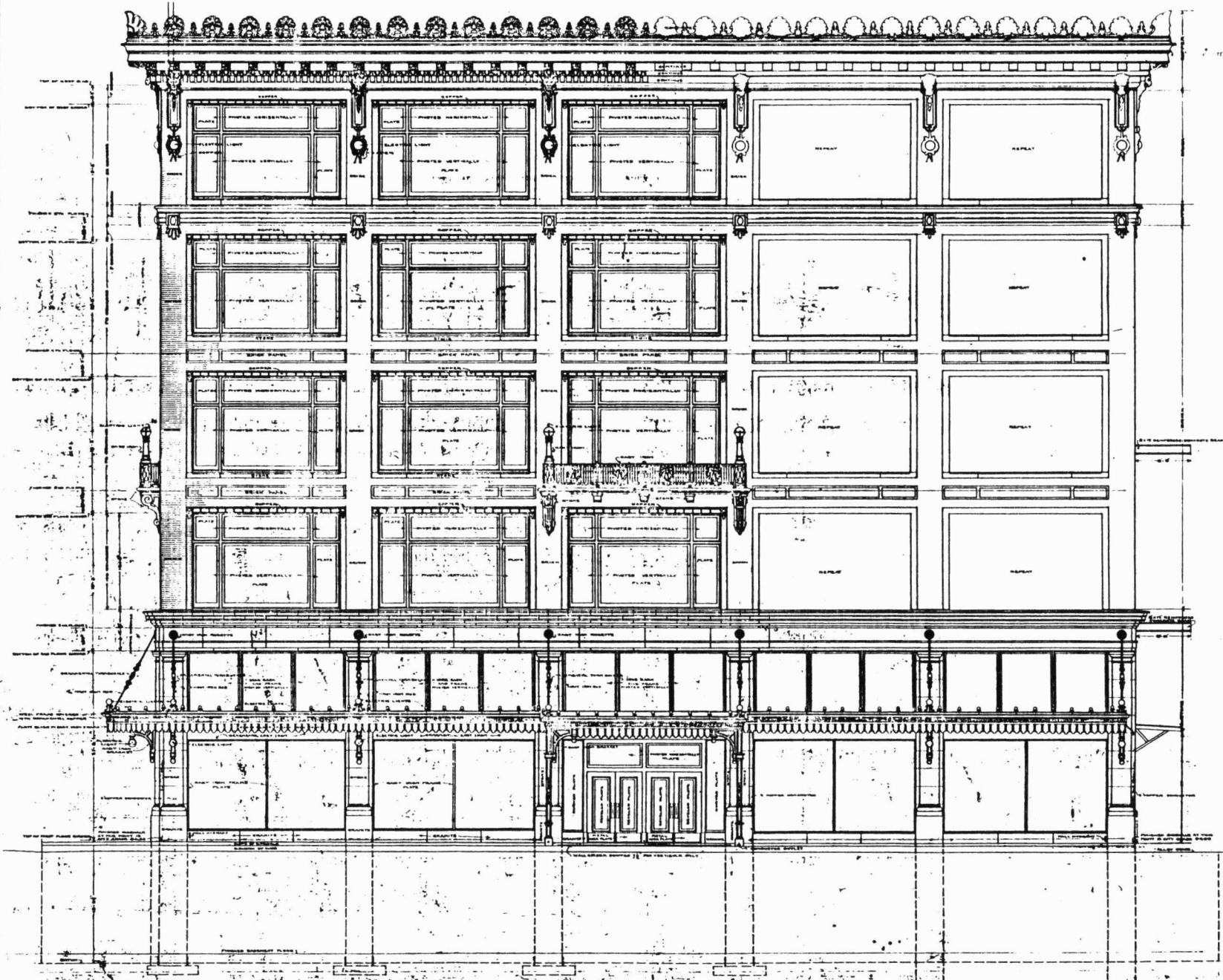
• SECOND FLOOR HEATING PLAN.
• SCALE 1/4 INCH = 1 FOOT.

DEPARTMENT STORE FOR NEWMAN REALTY CO.
COR. 6TH & MAIN STS. JOPLIN MO.

AUSTIN ALLEN & C. E. WILLIAMS, JR. ARCHTS. 612 JOPLIN ST. JOPLIN MO.
SEPTEMBER 20, 1909

Newman Brothers Building
Original Sixth Street
facade elevation.

1.



UNITED STATES DEPARTMENT OF THE INTERIOR
NATIONAL PARK SERVICE

NATIONAL REGISTER OF HISTORIC PLACES
EVALUATION/RETURN SHEET

REQUESTED ACTION: NOMINATION

PROPERTY NAME: Newman Brothers Building

MULTIPLE
NAME:

STATE & COUNTY: MISSOURI, Jasper

DATE RECEIVED: 6/20/90 DATE OF PENDING LIST: 7/03/90
DATE OF 16TH DAY: 7/19/90 DATE OF 45TH DAY: 8/04/90
DATE OF WEEKLY LIST:

REFERENCE NUMBER: 90001101

NOMINATOR: STATE

REASONS FOR REVIEW:

APPEAL: N DATA PROBLEM: N LANDSCAPE: N LESS THAN 50 YEARS: N
OTHER: N PDIL: N PERIOD: N PROGRAM UNAPPROVED: N
REQUEST: N SAMPLE: N SLR DRAFT: Y NATIONAL: N

COMMENT WAIVER: N

☒ ACCEPT ☐ RETURN ☐ REJECT 7/23/90 DATE

ABSTRACT/SUMMARY COMMENTS:

RECOM./CRITERIA Accept - A, C
REVIEWER Poland
DISCIPLINE Historian
DATE 7/23/90

DOCUMENTATION see attached comments Y/N see attached SLR Y/N

CLASSIFICATION

___count ___resource type

STATE/FEDERAL AGENCY CERTIFICATION

FUNCTION

___historic ___current

DESCRIPTION

___architectural classification
___materials
___descriptive text

SIGNIFICANCE

Period Areas of Significance--Check and justify below

Specific dates Builder/Architect
Statement of Significance (in one paragraph)

___summary paragraph
___completeness
___clarity
___applicable criteria
___justification of areas checked
___relating significance to the resource
___context
___relationship of integrity to significance
___justification of exception
___other

BIBLIOGRAPHY

GEOGRAPHICAL DATA

___acreage ___verbal boundary description
___UTMs ___boundary justification

ACCOMPANYING DOCUMENTATION/PRESENTATION

___sketch maps ___USGS maps ___photographs ___presentation

OTHER COMMENTS

Questions concerning this nomination may be directed to

_____ Phone _____

Signed _____ Date _____



Newman Brothers Building
1068

Manan Brothers Building
2 of 8



Neuman Brothers Building
3 of 8



Neuman Brothers Building
4 of 8





Newman Brothers Building
5 of 8



Newman Brothers Building
6 08



Newman Brothers Building
7 of 8



Newman Brothers Building, Joplin, Missouri
Photo # 8 of 8

49	52
48	33
47	34

8	56
7	57
50	120

96	95
94	92
50	120

109	110
111	112
113	114

149	148
147	146
145	144

164	165
163	162
161	160

204	203
202	201
200	199

STREET

46	35
45	36
44	37
43	38
42	39
41	40
120	120

6	58
5	59
4	60
3	61
2	62
1	63
50	120

THIRD

92	91
90	89
88	87
86	85
84	83
82	81
80	79

120	119
118	117
116	115
114	113
112	111
110	109
108	107

143	142
141	140
139	138
137	136
135	134
133	132
131	130

167	166
165	164
163	162
161	160
159	158
157	156
155	154

200	199
198	197
196	195
194	193
192	191
190	189
188	187

STREET

120	119
184	185
183	186
182	187
181	188
180	189
179	190

195	194
193	192
191	190
189	188
187	186
185	184
183	182

FOURTH

87	86
85	84
83	82
81	80
79	78
77	76
75	74

118	117
116	115
114	113
112	111
110	109
108	107
106	105

140	139
138	137
136	135
134	133
132	131
130	129
128	127

172	173
174	175
176	177
178	179
180	181
182	183
184	185

194	193
192	191
190	189
188	187
186	185
184	183
182	181

STREET

209	208
210	207
211	206
212	205
213	204
214	203
215	202

197	198
199	200
201	202
203	204
205	206
207	208
209	210

FIFTH

81	80
79	78
77	76
75	74
73	72
71	70
69	68

120	124
125	126
127	128
129	130
131	132
133	134
135	136

140	139
138	137
136	135
134	133
132	131
130	129
128	127

172	173
174	175
176	177
178	179
180	181
182	183
184	185

194	193
192	191
190	189
188	187
186	185
184	183
182	181

STREET

27	22
29	21
30	
31	
32	
33	
34	
35	
36	

197	198
199	200
201	202
203	204
205	206
207	208
209	210
211	212
213	214
215	216

SIXTH

81	80
79	78
77	76
75	74
73	72
71	70
69	68
67	66
65	64
63	62

120	124
125	126
127	128
129	130
131	132
133	134
135	136
137	138
139	140
141	142

140	139
138	137
136	135
134	133
132	131
130	129
128	127
126	125
124	123
122	121

172	173
174	175
176	177
178	179
180	181
182	183
184	185
186	187
188	189
190	191

194	193
192	191
190	189
188	187
186	185
184	183
182	181
180	179
178	177
176	175

Newman Brothers Building
Property Location
Scale 1" = 200'

STREET

47	46
48	45
49	44
50	43
51	42

120	119
118	117
116	115
114	113
112	111
110	109
108	107

SEVENTH

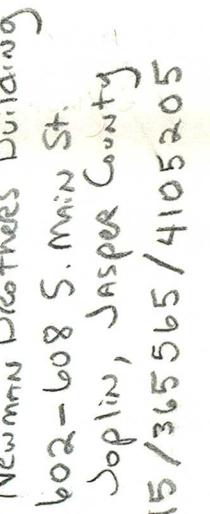
46	45
44	43
42	41
40	39
38	37
36	35
34	33

120	119
118	117
116	115
114	113
112	111
110	109
108	107

140	139
138	137
136	135
134	133
132	131
130	129
128	127

172	173
174	175
176	177
178	179
180	181
182	183
184	185

194	193
192	191
190	189
188	187
186	185
184	183
182	181



**MAP SALES
AND
SERVICES**
1100 Lebanon Rd.
Nashville, TN 37210
615-242-3388
Mountings & Laminations
AEROGRAPHICS & DESIGN-AERO'S

UTM GRID AND 1978 MAGNETIC NORTH
DECLINATION AT CENTER OF SHEET



ROAD CLASSIFICATION

Heavy-duty _____ Light-duty _____
Medium-duty _____ Unimproved dirt _____

 Interstate Route  U. S. Route  State Route

Newman Brothers Building
JOPLIN WEST, MO.—KANS.
N3700—W9430/7.5

1962
PHOTOREVISED 1978
AMS 7058 II SE—SERIES V879

JOHN ASHCROFT
Governor

G. TRACY MEHAN III
Director

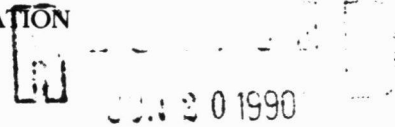


STATE OF MISSOURI
DEPARTMENT OF NATURAL RESOURCES

DIVISION OF PARKS, RECREATION, AND HISTORIC PRESERVATION

P.O. Box 176
Jefferson City, MO 65102
314-751-2479

Division of Energy
Division of Environmental Quality
Division of Geology and Land Survey
Division of Management Services
Division of Parks, Recreation,
and Historic Preservation



**NATIONAL
REGISTER**

June 12, 1990

Ms. Carol Shull
National Register Branch
Interagency Resources Division
National Park Service
1100 L Street, Room 6209
Washington, D.C. 20240

Dear Ms. Shull:

Enclosed please find the following submissions from Missouri for nomination to the National Register of Historic Places.

FOX THEATER
415 S. Main Street
Joplin, Missouri

NEWMAN BROTHERS BUILDING
602-608 S. Main Street
Joplin, Missouri

RAINS BROTHERS BUILDING
906-908 S. Main Street
Joplin, Missouri

These nominations were approved by our state review board, the Missouri Advisory Council on Historic Preservation, on May 11, 1990 and have been signed by our State Historic Preservation Officer, G. Tracy Mehan, III. All owners and appropriate elected public officials were notified and provided at least thirty (30) days to comment on the above proposed nominations in accordance with Section 60.6 (c) 36CFR60, interim regulations, using the exact notification format recommended by the National Register. No objections, notarized or otherwise, were received for the above referenced nominations.

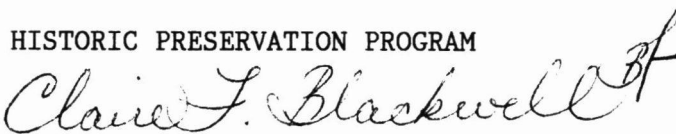
Ms. Carol Shull
June 12, 1990
Page 2

The City of Joplin, as part of its responsibilities as a Certified Local Government, reviewed the proposed nominations prior to their presentation to the state review board. Enclosed you will find letters of support from both the Mayor of Joplin, chief elected official, and the Joplin Historic Preservation Commission.

If you have any questions concerning these submissions, please contact Steve Mitchell of my staff at 314/751-5368.

Sincerely,

HISTORIC PRESERVATION PROGRAM

A handwritten signature in cursive script that reads "Claire F. Blackwell". To the right of the signature is a small, stylized monogram or set of initials, possibly "CFB".

Claire F. Blackwell
Director and Deputy State Historic
Preservation Officer

CFB:bfm

Enclosures: as stated

cc: The Honorable Donald L. Clark
Central Assembly Christian Life Center
Mr. Kenny Cox
Mr. Ray E. Rose
Mr. Philip Thomason
Joplin Historic Preservation Commission

November 21, 1988

City Hall
303 E 3rd St
Joplin, MO 64801

Attn: Mr. Dick Largent,

I am writing this letter to express my support of the Joplin Historical Society's efforts to survey buildings in Joplin for the purpose of National Historic building Re-gristration. As the owner of the property located at 602-608 Main St. in Joplin, I will be happy to cooperate with this important survey.

Furthermore, renovations done to this building will attempt to restore the unique architectural integrity of this property.

If I can be of further assistance please feel free to contact me.

Sincerely,


Gary Cox

GDC/jkp

City
of *Joplin*

303 E. Third Street • P.O. Box 1355 • Joplin, MO 64802-1355 • (417) 624-0820

December 11, 1989

RECEIVED
DEC 23 1989

HISTORIC PRESERVATION
PROGRAM

Mrs. Claire F. Blackwell
Director
Historic Preservation Program
Department of Natural Resources
Division of Parks, Recreation, and
Historic Preservation
P.O. Box 176
Jefferson City, MO 65102

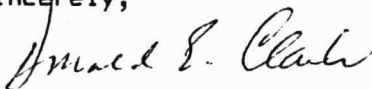
Dear Mrs. Blackwell:

I recently had the opportunity to review the four nominations to the Register of Historic Places submitted by the City of Joplin. I feel that we have elected to have presented four of our most notable examples of significant architecture and historically important structures. Although we feel that there are probably more buildings and sites of equal importance and significance in the community, these four buildings will help build the inventory of designated places for our future enjoyment. It is our hope that these structures will provide the foundation of a larger program, privately founded that will enhance the city's image. I am in total agreement and support the structures chosen and nominated through our consultant. These four structures are:

Scottish Rite Cathedral, 505 Byers
Newman Brothers Building, 602-608 Main street
Fox Theater, 415 Main street
Rains Brothers Building, 906-908 Main Street

I look forward to assisting in the submission of future nominations in our community.

Sincerely,



Dr. Donald E. Clark
Mayor

City
of *Joplin*

303 E. Third Street • P.O. Box 1355 • Joplin, MO 64802-1355 • (417) 624-0820

December 11, 1989

Mrs. Claire F. Blackwell, Director
Historic Preservation Program
Department of Natural Resources
Division of Parks, Recreation,
and Historic Preservation
P.O. Box 176
Jefferson City, Missouri 65102

Dear Mrs. Blackwell:

The Historic Preservation Commission of the City of Joplin has had an opportunity to review the four National Register of Historic Places nominations recently completed by Mr. Philip Thomason for the City. It is our opinion that Mr. Thomason has correctly identified the social, commercial and architectural significance of each of the four structures. We are quite pleased with the nominations in both their completeness and professional presentation. To avoid misunderstanding the following buildings were nominated:

Scottish Rite Cathedral, 505 Byers
Newman Brothers Building, 602-608 Main Street
Fox Theater, 415 Main Street
Rains Brothers Building, 906-908 Main Street

It is the unanimous opinion of the Commission that these structures will provide a valuable framework around which to build the public awareness in the importance of Historic Preservation in our community. It is our hope that these nominations will be designated and placed on the Register.

Sincerely,

Michael O'Leary
Michael O'Leary, Chairman
Historic Preservation Commission